

IP66 LED Triproof Light (Series K)(Emergency)



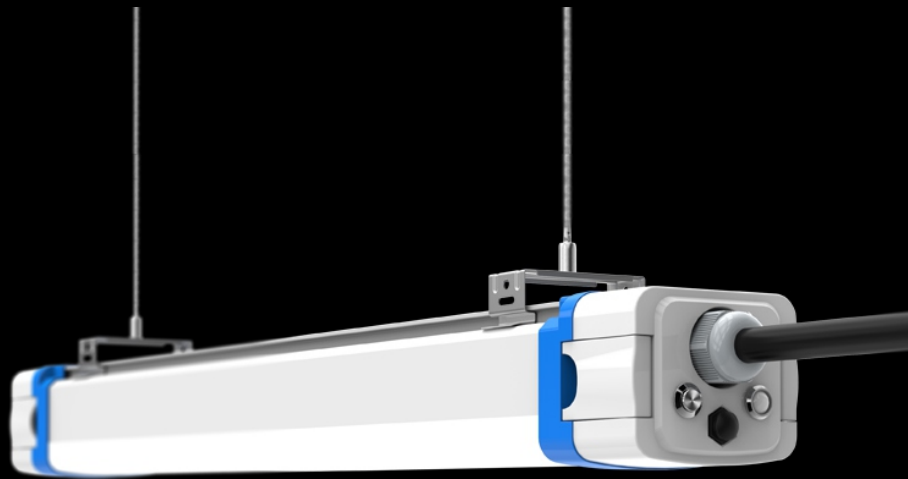
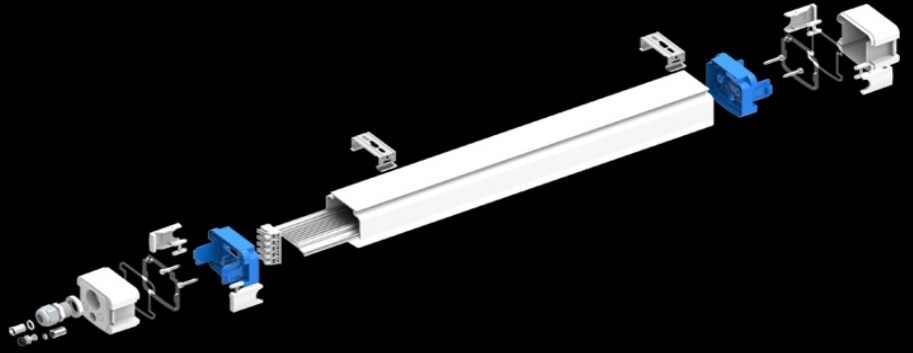
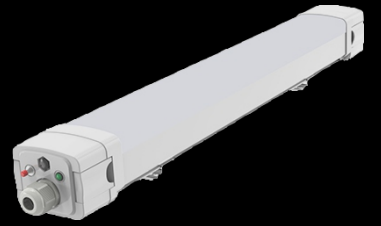
● Emergency LED Triproof





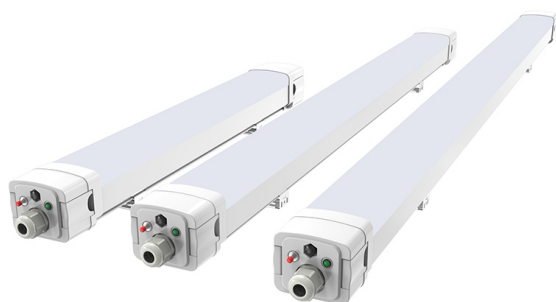
Standard

With Emergency



SPECIFICATION

IP66 Tri-proof LED Light



Caution

- Please read the user manual before installation.
- Please install, connect and test the lamp according to local regulations. Lamps should always be installed or replaced with care by professional person.
- Ensure the power is switched off before installation.
- Please check whether the lamps are broken or not during shipping, broken items cannot be used anymore.
- Please keep the lamps and accessories away from kids to avoid hurt by mistakes.
- For protecting eyes, please do not watch the luminous surface for a long time.
- Do not cover anything on lamp and keep lamps away from fire or high temperature objects.
- Incorrect installation and using, keep the right to refuse after-sales service for those disassembled or repaired items.
- Switch the power off and cool down the lamp before cleaning.
- The lamp is only suitable for weak acid and weak base environment.
- Please DO NOT install this product in the following places:
 1. The place has a large quantity of lampblack and smoke, such as: kitchen and food processing factory etc.
 2. The place has a large quantity of chemical corrosive substance, such as: chemical plant and stockyard etc.
 3. The place has poor temperature conditions, large-scale temperature variation, which would easily lead to broken and damage the product, the applicable operating temperature is between -20 and 50 degrees.

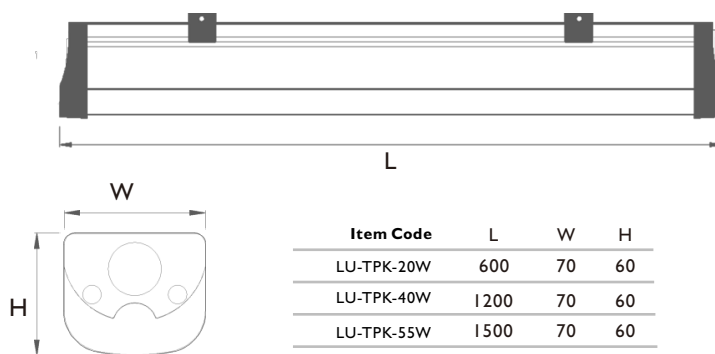
Features

- Water-proof, Dust-proof, Damp-proof, Pressure-proof.
- High luminous efficiency 150LM/W.
- Maximum 3M Long for single product.
- Excellent heat dissipation support stable quality.
- Convention installation for linking in series.
- Low light decay, L70=50,000 Hours.
- High impact test, IK10.
- Long lifespan 50,000 hours.
- Energy saving up to 80%.
- 5 years warranty.

Application

- Parking place
- Tunnel / Corridor / Gallery
- Railway / Bus / MTR Station
- Warehouse / Factory
- Airport
- Exhibition Hall
- Supermarket
- Gas station

Dimension



Temperature Characteristics T-ambient 40°C

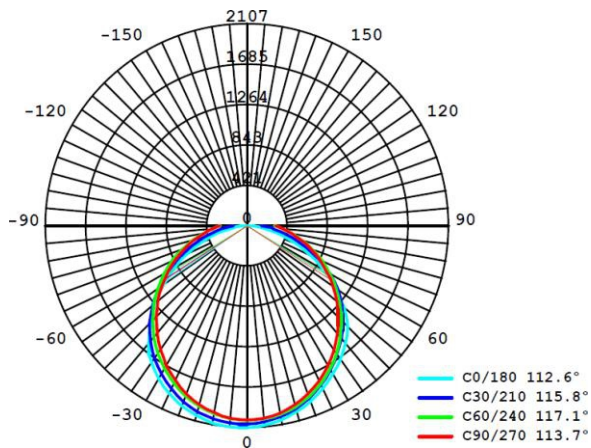
Temperature

Operating: -20 ~ +50°C
Storage: -40 ~ +85°C

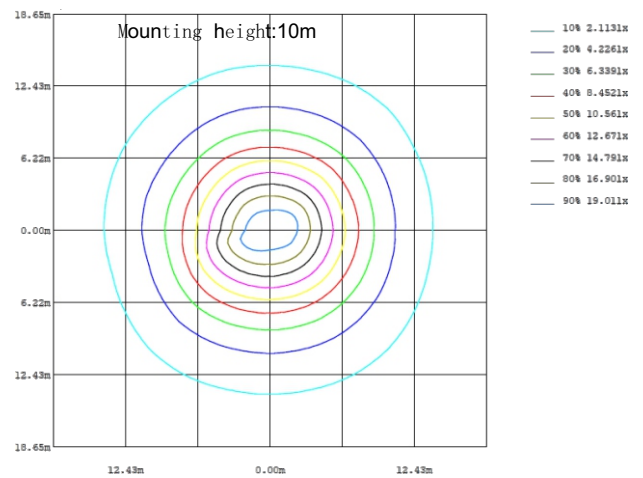
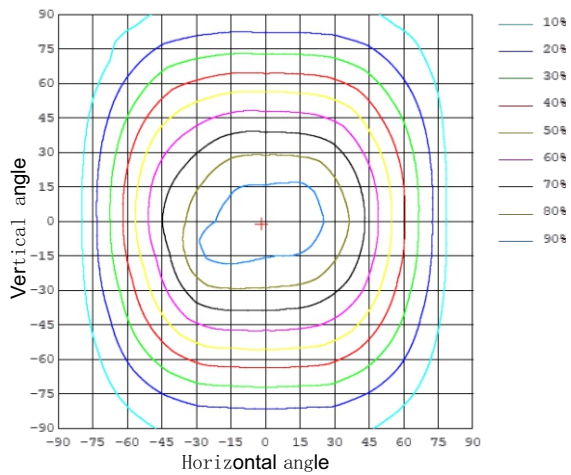
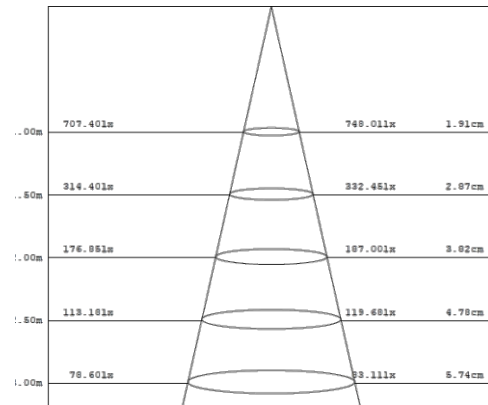
PARAMETER

Model No.	LU-TPK
Material	PC Cover and Stainless Steel Base
Size(mm)	20W:600*70*60 40W:1200*70*60
	55W:1500*70*60
Input Voltage	AC220-240V/AC100-277V
Power	20W/40W/55W
Chips	SMD2835
Driver	CE Driver (Optional)
P.F.	>0.9
Luminous Flux	3000/6000/8250lm
Luminous Efficiency	150lm/W
CRI	>85Ra
Beam Angle	120
IP Level	IP66
Warranty	5 Years
Series Connection	Optional
Emergency pack	Optional

PARAMETER



AVERAGE BEAM ANGLE (50%) 114.8

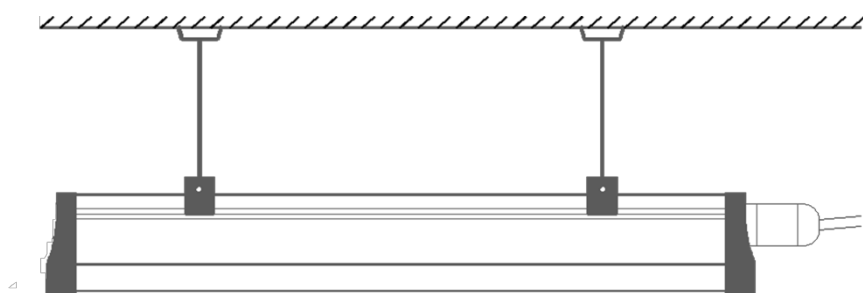


INSTALLATION

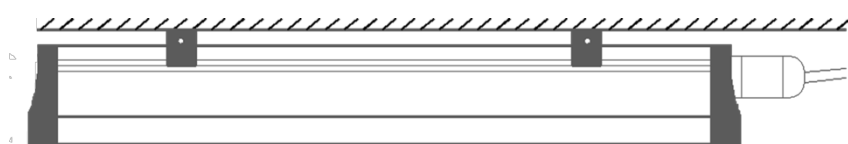
Cautions:

Before installation, be sure to cut off electricity to avoid electric shock.

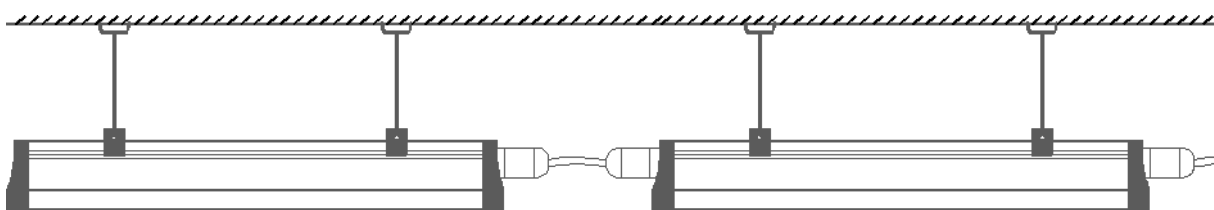
This is one end wiring LED Tri-proof light with build-in driver. Powered by the voltage labeled on the LED Tri-proof light, no need to add other drivers.



Hanging Type



Ceiling type



PACKAGE

Item code	Size	Pcs/Ctn	Carton Size	N.W.(kg) /PC	G. W.(kg) /CTN
LU-TPK-20W	600mm	9	700*270*220	0.65	6.4
LU-TPK-40W	1200mm	9	1300*270*220	1.15	11
LU-TPK-55W	1500mm	9	1600*270*220	1.4	13

