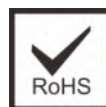


STH SERIES LED Street Light



Light up your life

www.luccalight.com

SPECIFICATION

Street Light Series STH



Black



Dark Grey



Light Grey

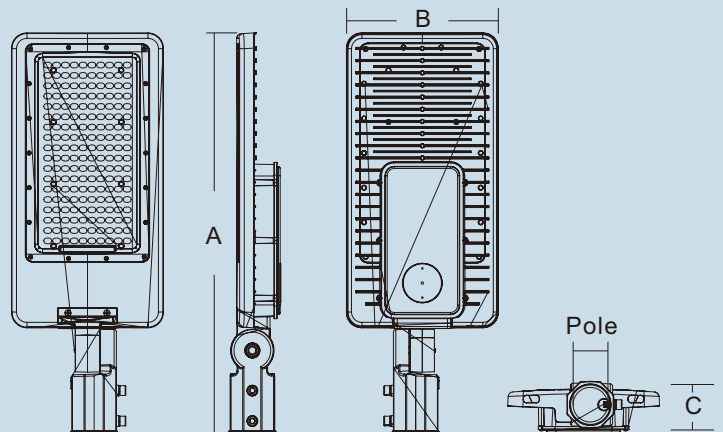
Features

- > The Luminance uniformity of the emitting surface is over 90%.
- > High light output and reduced energy consumption of up to 50%.
- > Wide angle of deflection with even light distribution.
- > No start-up time, no humming.
- > Independent LED circuit prevents complete blackout in case an LED fails.
- > Environmentally friendly, no mercury and no lead.
- > Causes no electromagnetic interference.

Application

- > Street

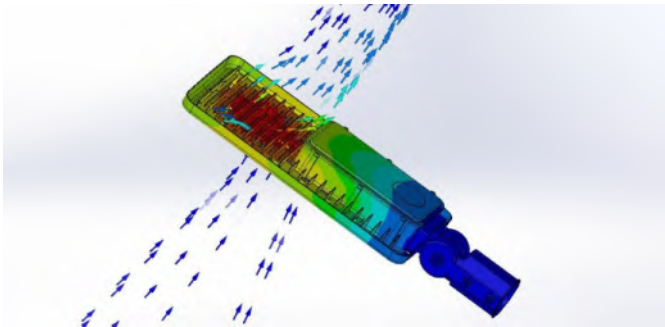
Dimension



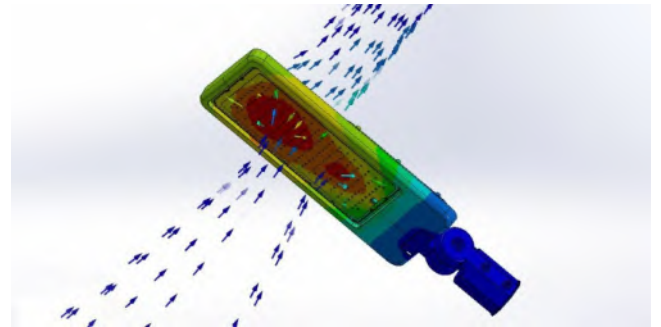
Model	A(mm)	B(mm)	C(mm)	Pole(mm)
LU-STH-50W	503	168	86	60
LU-STH-100W	568	210	88	60
LU-STH-150W	659	250	87	60
LU-STH-200W	734	300	108	60

THERMAL MANAGEMENT

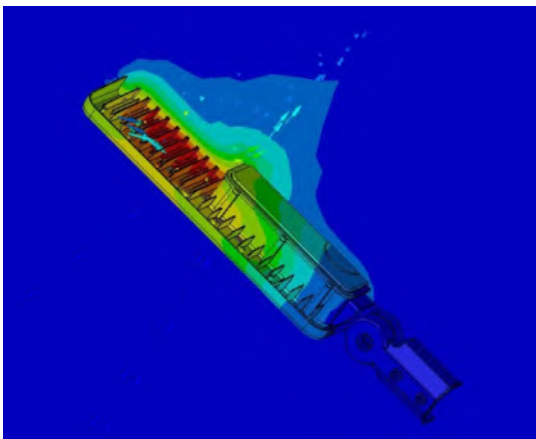
Structure is optimized by advanced FEA technology. Achieving longer lifespan at best cost-efficiency.



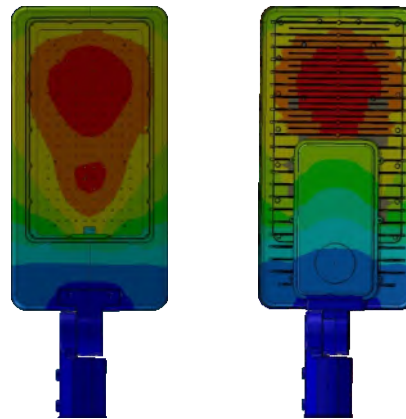
Thermal Air Convection



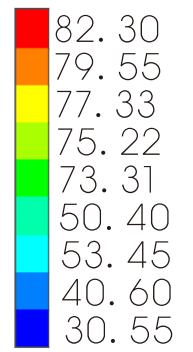
Thermal Air Convection



Thermal Effects to Air



Thermal Conductivity



Unit: °C

01



EXPLODED

Optional with Photocell Sensor

Die-casting Aluminum Housing

Silicon Rubber

Die-casting Aluminum Housing

3030/5050 SMD LED Chips

IP65 Waterproof LED Driver

Driver Fixed Plate

Aluminum PCB

Waterproof Silicon Rubber

UV-proof PC Optical Lens



Optional with solar solutions



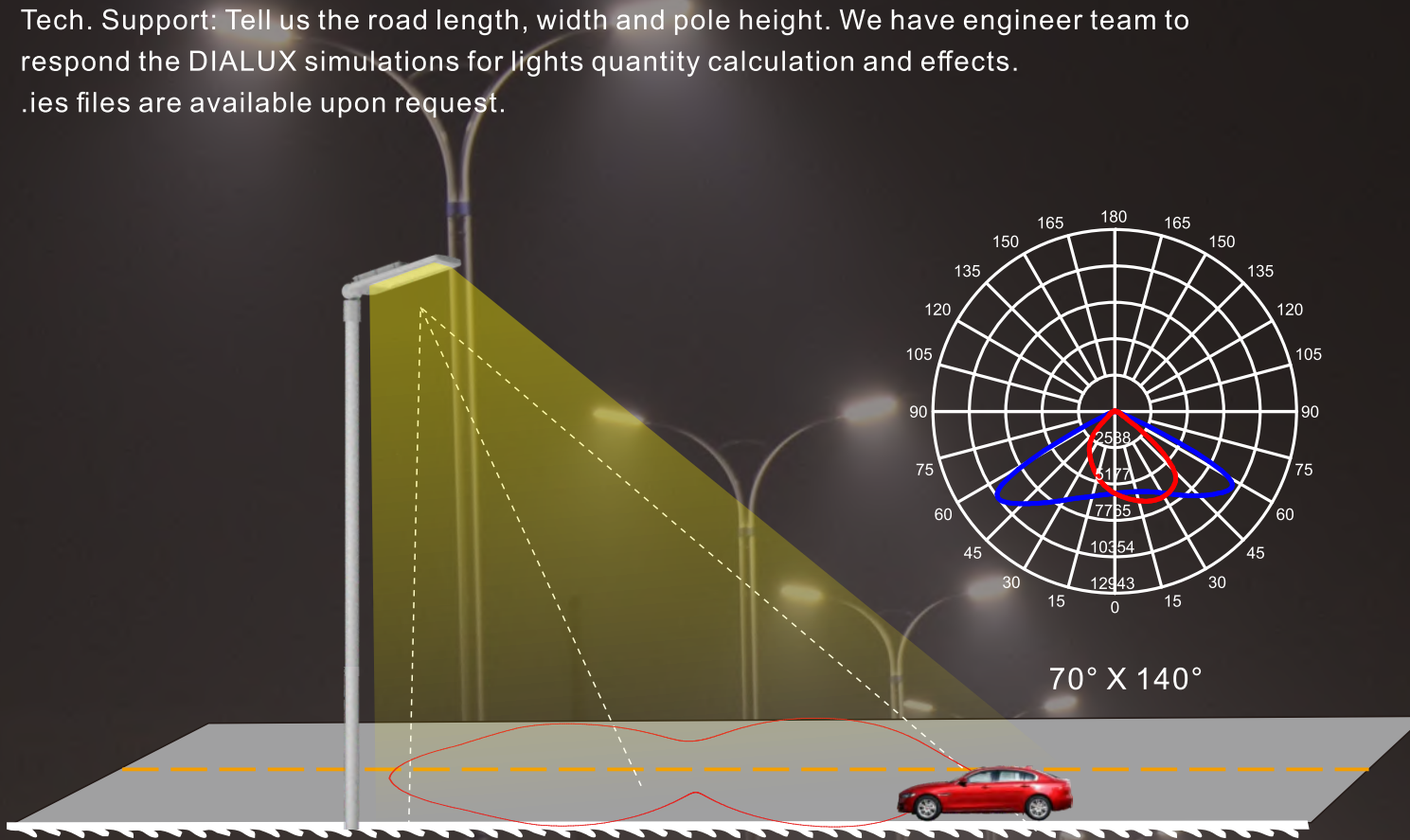
Fixed Angle



Adjustable Angle

OPTICS

Tech. Support: Tell us the road length, width and pole height. We have engineer team to respond the DIALUX simulations for lights quantity calculation and effects. .ies files are available upon request.



OPTIONAL WITH SOLAR SOLUTIONS -FEATURES BELOW:

Cut-off lighting distribution design
Not Dazzling

Lighting Mode: Light Induction + Remote Controller

Auto Working Mode: 0-30 minutes 100% light; then each 3 minutes the light will be darkened 1%

Invalid Button

On Switch

Invalid Button

Turn Bright

Half Light Mode

Timing 3 hours, after the light working 3 hours, it will turn off automatically

Timing 8 hours, after the light working 8 hours, it will turn off automatically

Off Switch

Full Light Mode

Turn Dark

0-30 minutes 100% light; then each 3 minutes the light will be darkened 1%

Timing 5 hours, after the light working 5 hours, it will turn off automatically

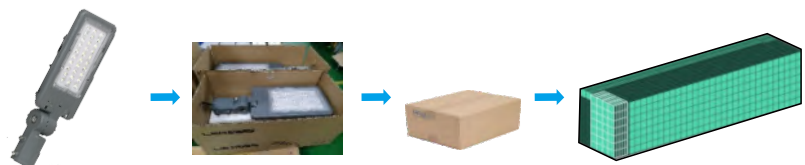


PARAMETER



Model No.	LU-STH-50W	LU-STH-100W	LU-STH-150W	LU-STH-200W
Rate Power	50W	100W	150W	200W
LED Qty	30	60	90	120
Pole size	φ40mm	φ50/60mm	φ60mm	φ60mm
Lamp Size(mm)	351*142*76	405*166*79	484*211*83	580*242*83
Material	Die-casting aluminum Body + PC Lens			
Finished	Light Grey / Dark Grey / Black			
Chips	Epistar SMD			
Driver	Hahga Driver			
Input Voltage	AC100-277V			
T.H.D.	<15%			
P.F.	>0.95			
Luminous Efficiency	120lm/W / 140lm/W			
Luminous Flux(120lm/W)	6000lm	12000lm	18000lm	24000lm
Luminous Flux(140lm/W)	7000lm	14000lm	21000lm	28000lm
CRI	>70Ra / >80Ra			
Beam Angle	60/90/120/T2M/T3M/T4M			
IP Level	IP66			
IK Level	IK10			
Input Wire	SJOW17AWGx3C&H05RN-F 1.0m ² (30cm)			
Warranty	3Year (36,000hr) / 5year(50,000hr)			
Optional Function	Photocell / Motion sensor / 0-10V / DALI ...etc			

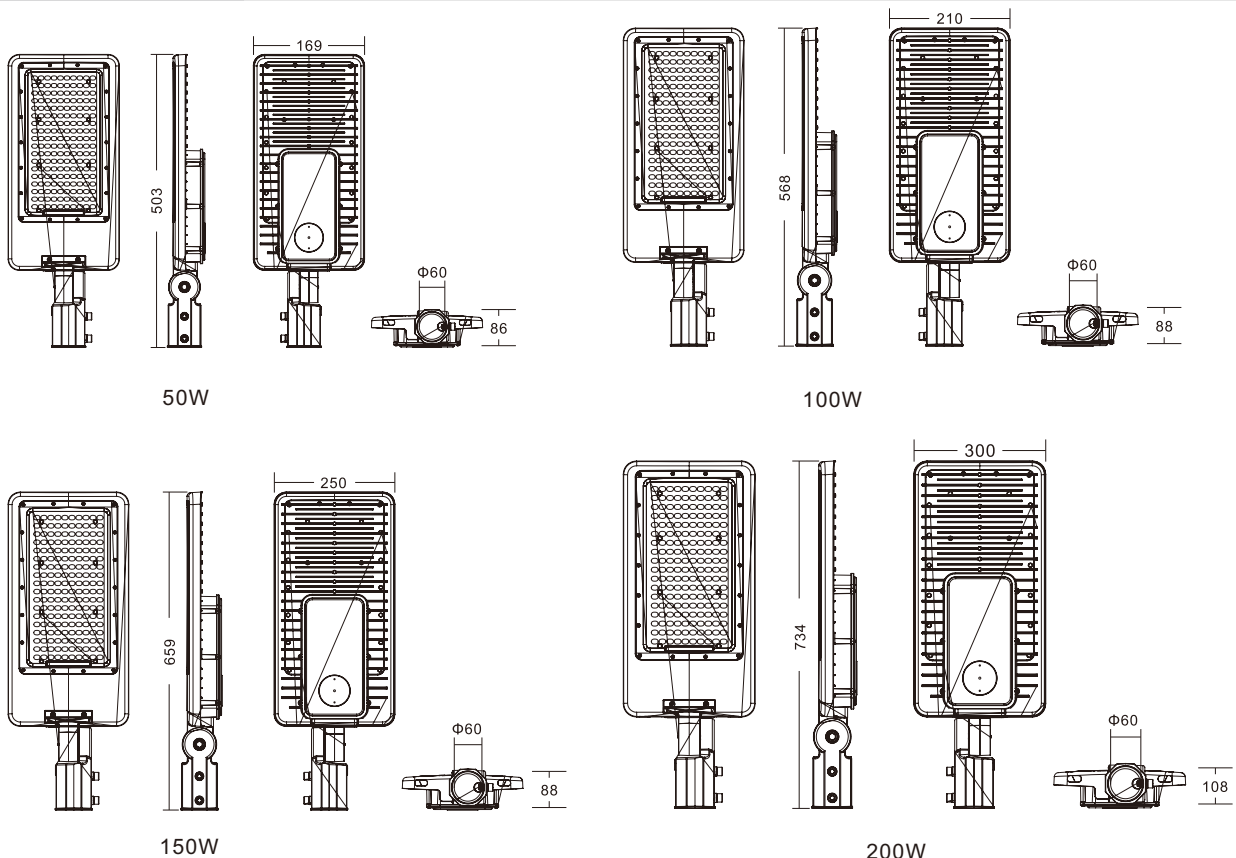
PACKAGE



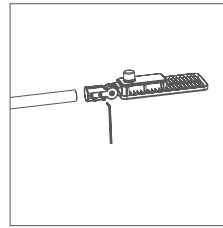
Model	Package Size(mm)	Pcs/Ctn	20'GP/pcs	40'GP/pcs	40'HQ/pcs
50W	550*240*115	1	1800	3730	4460
100W	610*290*115	1	1280	2660	3190
150W	695*315*115	1	1030	2150	2570
200W	770*365*135	1	710	1470	1760

SAFETY PARAMETER

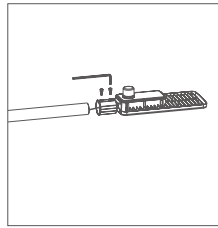
Protection	
Output Short Circuit Protection	Burp,Auto-recover
Output Over-Voltage Protection	
Output Open Circuit Protection	Output Voltage<60Vdc
Over-heat Protection	
Safety Standard	GB19510.1,GB19510.14; EN61347-1,EN61347-2-13; UL8750,CSAC22.2No.250.13-12
Dielectric Strength	P-S:3750VAC/5MA/60s P-E:1500VAC/5mA/60s
Insulation Resistance	I/P-O/P:>50M Ohms / 500VDC/ 25°C /70%RH
Leakage Current	<0.25mA for Class 2 at max Input Voltage
EMI	GB17743,GB17625.1; EN55015,EN61000-3-2,EN61000-3-3,FCCClassB.
EMS	EN61000-4-2,3,4,5,6,8,11,EN61547.
Surge Immunity	6KV
Operating Temperature	-40°C~ 60°C
Operating Humidity	20 ~ 90 %RH
Storage Temperature	-40°C~ 85°C
Storage Humidity	20 ~ 90 %RH



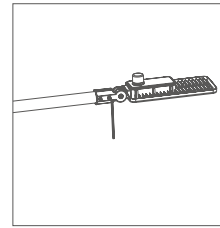
INSTALLATION



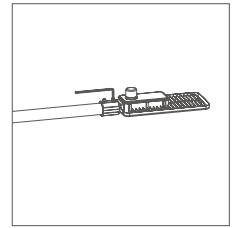
1 Use screws to fix the lamp holder on the wall.



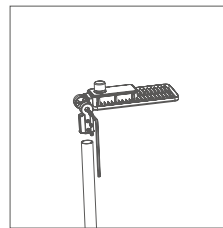
2 Connect wire and put the lamp on the lamp holder.



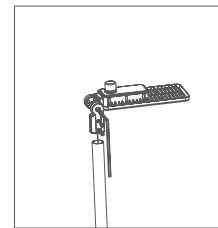
3 Fasten the screws.



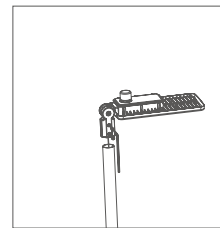
4 Installation completed.



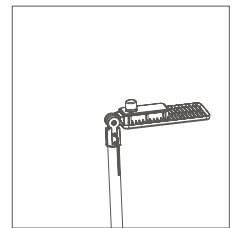
1 Mount the lamp holder on the pole.



2 Connect wire and put the lamp on the lamp holder.



3 Fasten the screws.



4 Installation completed.

CAUTIONS:

1. Installation must be done by professional electricians .
2. Do NOT take apart the product. It may be dangerous.
3. Do NOT stare at the light with naked eyes. It is harmful to eyes.
4. For outdoor lighting, waterproof measurements must be done for the cable terminals.

WARRANTY

1. All LED Street Lights are warranted by the manufacturer to be free of defects in material and workmanship for 3 or 5 years(as per sale contracts).
2. Warranty becomes void if the products is modified, improperly installed or used, damaged by accident or neglect, or if any parts are improperly installed or replaced by the user.
3. During the warranty time, if the products fails at normal environment and applications, we should decide by our own to repair or replace without any charge.

