

STWE SERIES

LED Street Light



Light up your life

www.luccalight.com

SPECIFICATION

Street Light Series STWE



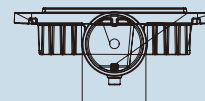
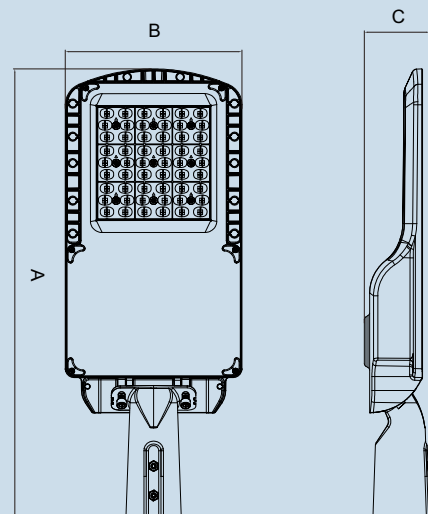
Features

- > The Luminance uniformity of the emitting surface is over 90%.
- > High light output and reduced energy consumption of up to 50%.
- > Wide angle of deflection with even light distribution.
- > No start-up time, no humming.
- > Independent LED circuit prevents complete blackout in case an LED fails.
- > Environmentally friendly, no mercury and no lead.
- > Causes no electromagnetic interference.

Application

- > Street

Dimension

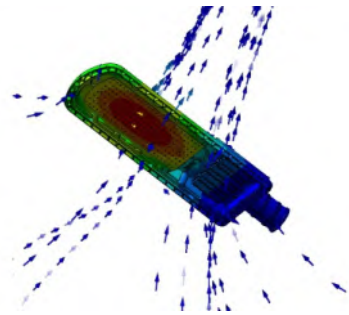


Pole

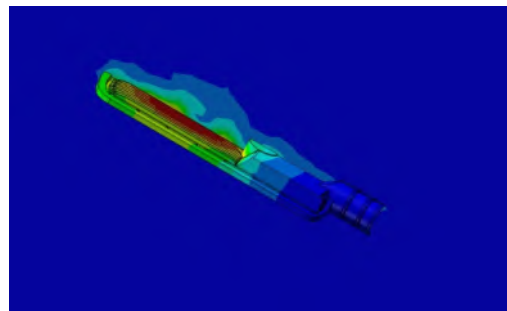
Model	A(mm)	B(mm)	C(mm)	Pole(mm)
LU-STWE-50W	463	173	87	40/50/60
LU-STWE-75W	470	200	110	40/50/60
LU-STWE-100W	611	240	111	40/50/60
LU-STWE-150W	680	260	111	40/50/60
LU-STWE-200W	693	300	111	40/50/60

THERMAL MANAGEMENT

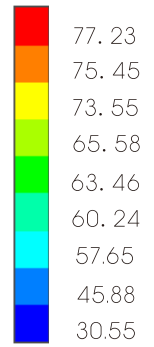
Structure is optimized by advanced FEA technology. Well managed temperature rise between internal and external parts. Even thermal distributions. Higher lumen maintenance rate.



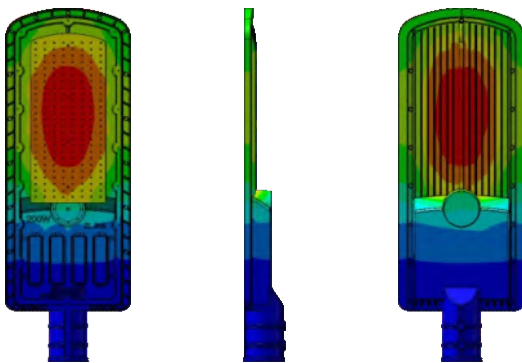
Thermal Air Convection



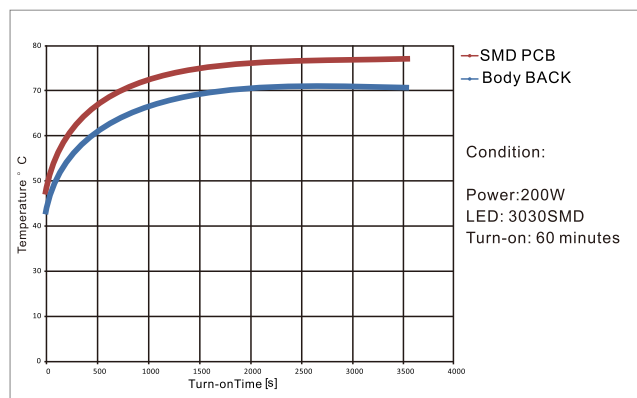
Thermal Effects to Air



Unit: °C

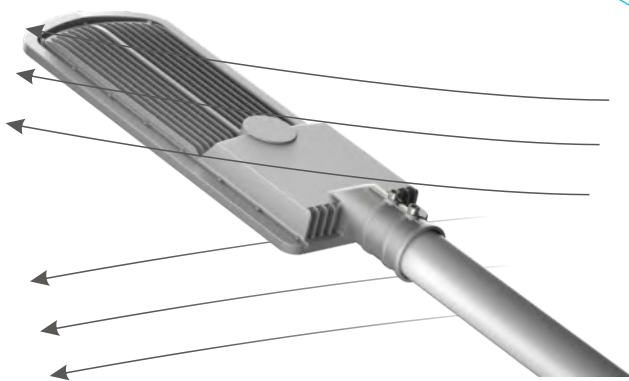


Thermal Conductivity



Temperature Rise

Streamline design, wind-proof.



Reliable wind-proof structure

EXPLODED

ADC12 die-casting aluminum body,
thermal efficiency up to 96W/M.K.

Highly thermal conductive aluminum pcb

UV-proof optical lens.
Precision road lighting distributions.

Optional with sensor

Famous Brand Waterproof LED Driver

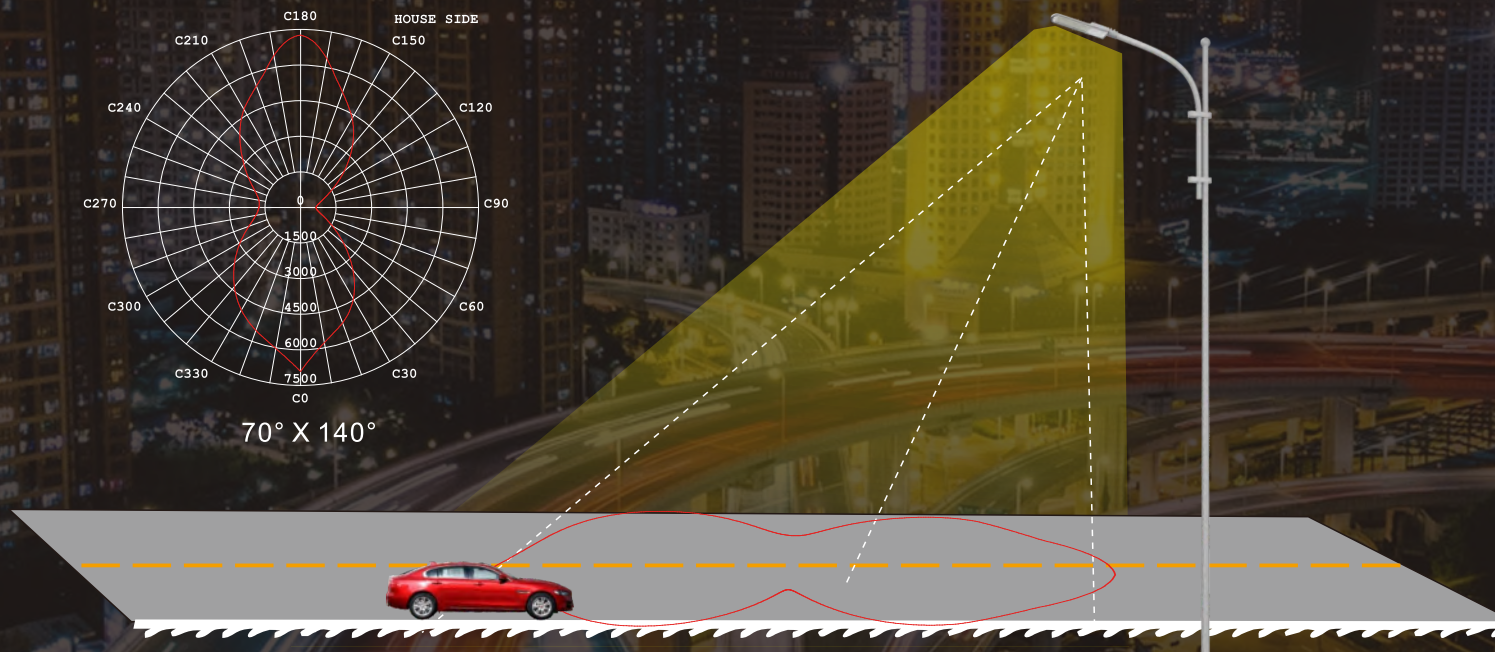
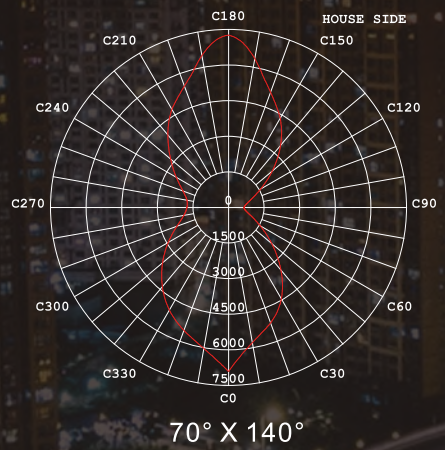
3030SMD light source, lighting
efficacy up to 150lm/W

UV-proof waterproof silicone gel



OPTICS

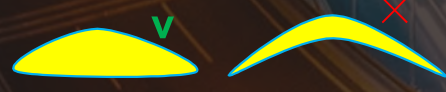
Tech. Support: Tell us the road length, width and pole height. We have engineer team to respond the DIALUX simulations for lights quantity calculation and effects. .ies files are available upon request.



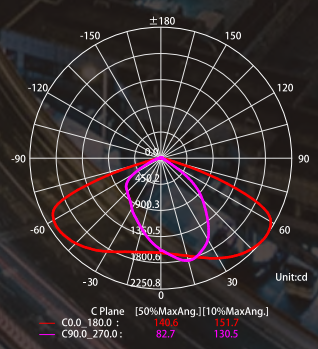
Energy Saving Design



Highly Uniformity Design



Cut-off Angle Design



C plane lighting distributions

PARAMETER



Model No.	LU-STWE-50W	LU-STWE-75W	LU-STWE-100W	LU-STWE-150W	LU-STWE-200W
Rate Power	50W	75W	100W	150W	200W
LED Qty	64pcs	96pcs	144pcs	192pcs	256pcs
Pole size	φ40/50/60mm	φ40/50/60mm	φ40/50/60mm	φ40/50/60mm	φ40/50/60mm
Lamp Size(mm)	463*173*87	570*200*110	611*240*111	680*260*111	693*300*111
Material	Die-casting aluminum Body + PC Lens				
Finished	GreyBlack				
Chips	Bridgelux SMD				
Driver	Hahga Driver				
Input Voltage	AC100-305V				
T.H.D.	<15%				
P.F.	>0.95				
Luminous Efficiency	130lm/W				
Luminous Flux(130lm/W)	6500lm	9750lm	13000lm	19500lm	26000lm
CRI	>70Ra				
Beam Angle	60/90/120/T2M/T3M/T4M				
IP Level	IP66				
IK Level	IK10				
Input Wire	SJOW17AWGx3C&H05RN-F 1.0m ² (30cm)				
Warranty	5year(50,000hr)				
Optional Function	Photocell / Motion sensor / 0-10V / DALI ...etc				

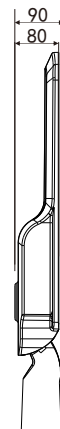
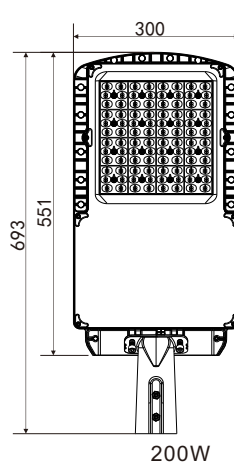
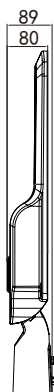
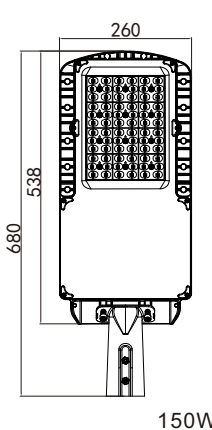
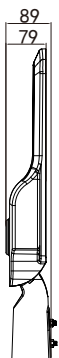
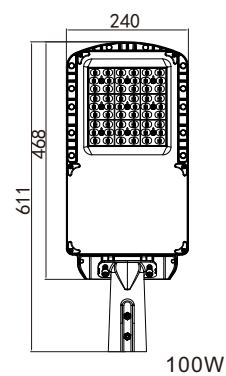
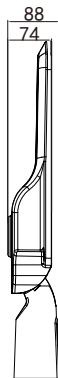
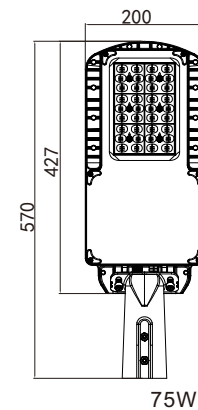
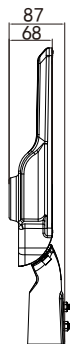
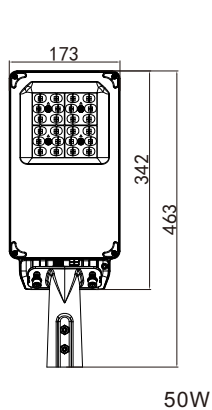
PACKAGE



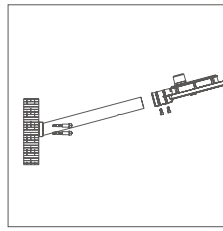
Model	Package Size(mm)	Pcs/Ctn	20'GP/pcs	40'GP/pcs	40'HQ/pcs
50W	540*266*165	1			
75W	623*255*150	1			
100W	666*295*150	1			
150W	736*315*150	1			
200W	747*355*150	1			

SAFETY PARAMETER

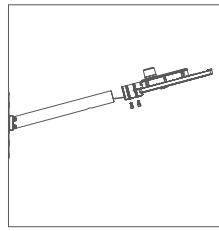
Protection	
Output Short Circuit Protection	Burp,Auto-recover
Output Over-Voltage Protection	Auto-recover
Output Open Circuit Protection	Auto-recover
Over-heat Protection	Auto-recover
Safety Standard	GB19510.1,GB19510.14; EN61347-1,EN61347-2-13; UL8750,CSAC22.2No.250.13-12
Dielectric Strength	P-S:3750VAC/5MA/60s P-E:1500VAC/5mA/60s
Insulation Resistance	I/P-O/P:>50M Ohms / 500VDC/ 25°C /70%RH
Leakage Current	<0.25mA for Class 2 at max Input Voltage
EMI	GB17743,GB17625.1; EN55015,EN61000-3-2,EN61000-3-3,FCCClassB.
EMS	EN61000-4-2,3,4,5,6,8,11,EN61547.
Surge Immunity	6KV
Operating Temperature	-40°C~ 60°C
Operating Humidity	20 ~ 90 %RH
Storage Temperature	-40°C~ 85°C
Storage Humidity	20 ~ 90 %RH



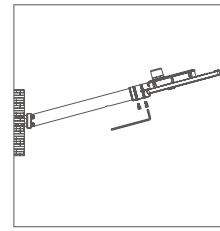
INSTALLATION



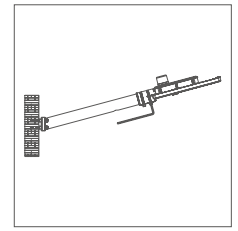
1 Use screws to fix the lamp holder on the wall.



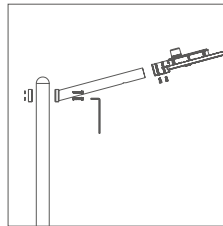
2 Connect wire and put the lamp on the lamp holder.



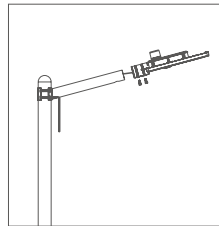
3 Fasten the screws.



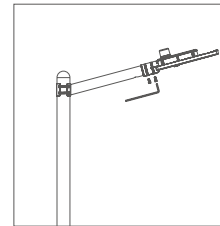
4 Installation completed.



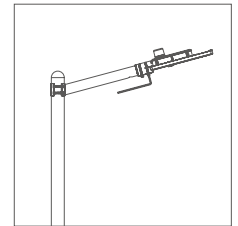
1 Mount the lamp holder on the pole.



2 Connect wire and put the lamp on the lamp holder.



3 Fasten the screws.



4 Installation completed.

CAUTIONS:

1. Installation must be done by professional electricians .
2. Do NOT take apart the product. It may be dangerous.
3. Do NOT stare at the light with naked eyes. It is harmful to eyes.
4. For outdoor lighting, waterproof measurements must be done for the cable terminals.

WARRANTY

1. All LED Street Lights are warranted by the manufacturer to be free of defects in material and workmanship for 3 or 5 years(as per sale contracts).
2. Warranty becomes void if the products is modified, improperly installed or used, damaged by accident or neglect, or if any parts are improperly installed or replaced by the user.
3. During the warranty time, if the products fails at normal environment and applications, we should decide by our own to repair or replace without any charge.

