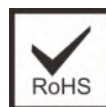


STZ SERIES LED Street Light

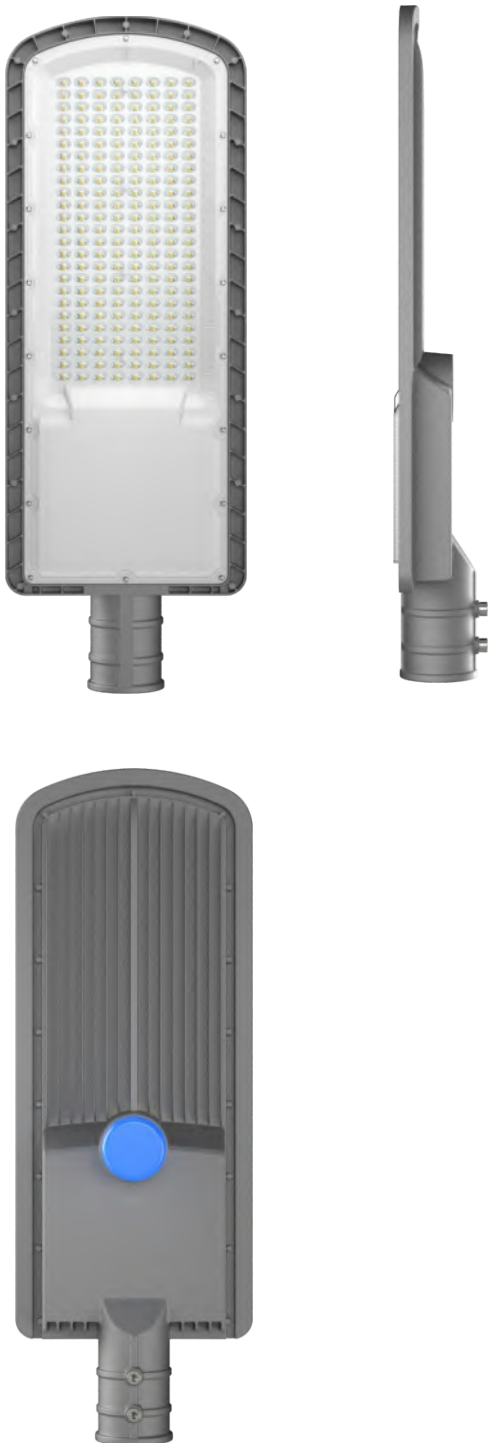


Light up your life

www.luccalight.com

SPECIFICATION

Street Light Series STZ



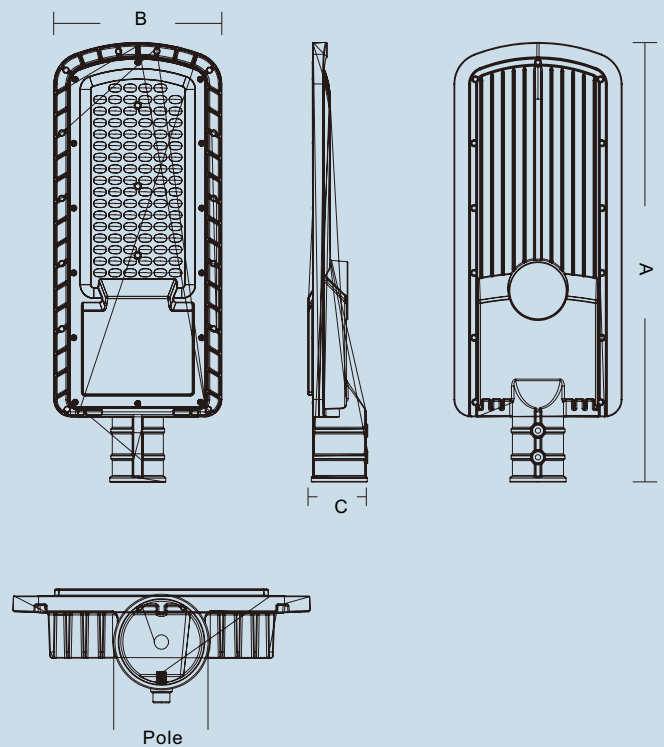
Features

- > The Luminance uniformity of the emitting surface is over 90%.
- > High light output and reduced energy consumption of up to 50%.
- > Wide angle of deflection with even light distribution.
- > No start-up time, no humming.
- > Independent LED circuit prevents complete blackout in case an LED fails.
- > Environmentally friendly, no mercury and no lead.
- > Causes no electromagnetic interference.

Application

- > Street

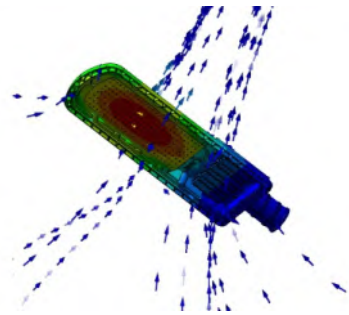
Dimension



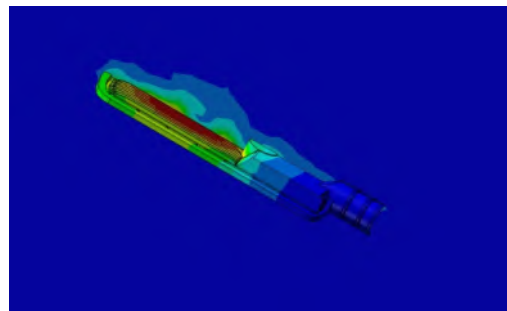
Model	A(mm)	B(mm)	C(mm)	Pole(mm)
LU-STZ-50W	415	170	70	50
LU-STZ-100W	495	190	70	50
LU-STZ-150W	595	210	80	50/60
LU-STZ-200W	645	230	80	50/60

THERMAL MANAGEMENT

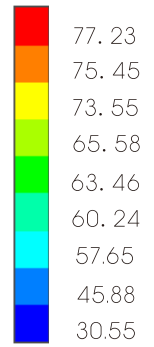
Structure is optimized by advanced FEA technology. Well managed temperature rise between internal and external parts. Even thermal distributions. Higher lumen maintenance rate.



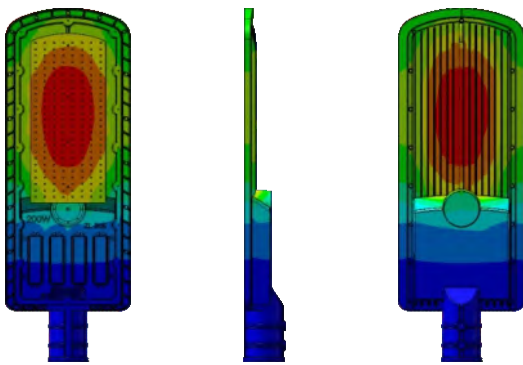
Thermal Air Convection



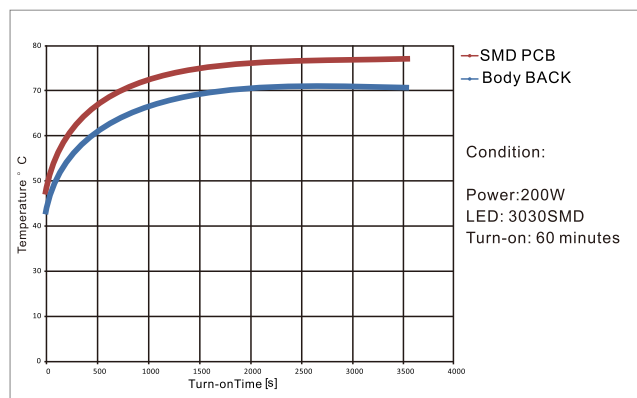
Thermal Effects to Air



Unit: °C

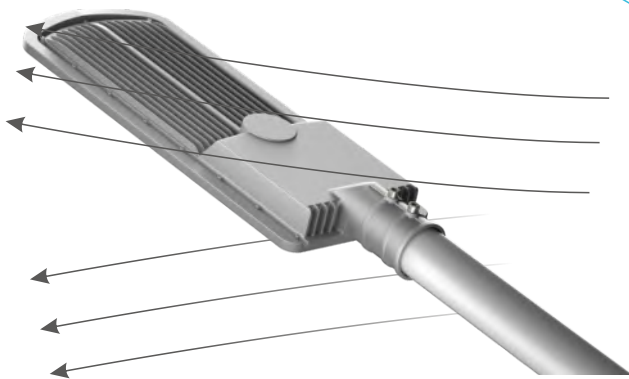


Thermal Conductivity



Temperature Rise

Streamline design, wind-proof.



Reliable wind-proof structure

EXPLODED

ADC12 die-casting aluminum body,
thermal efficiency up to 96W/M.K.

Optional with sensor

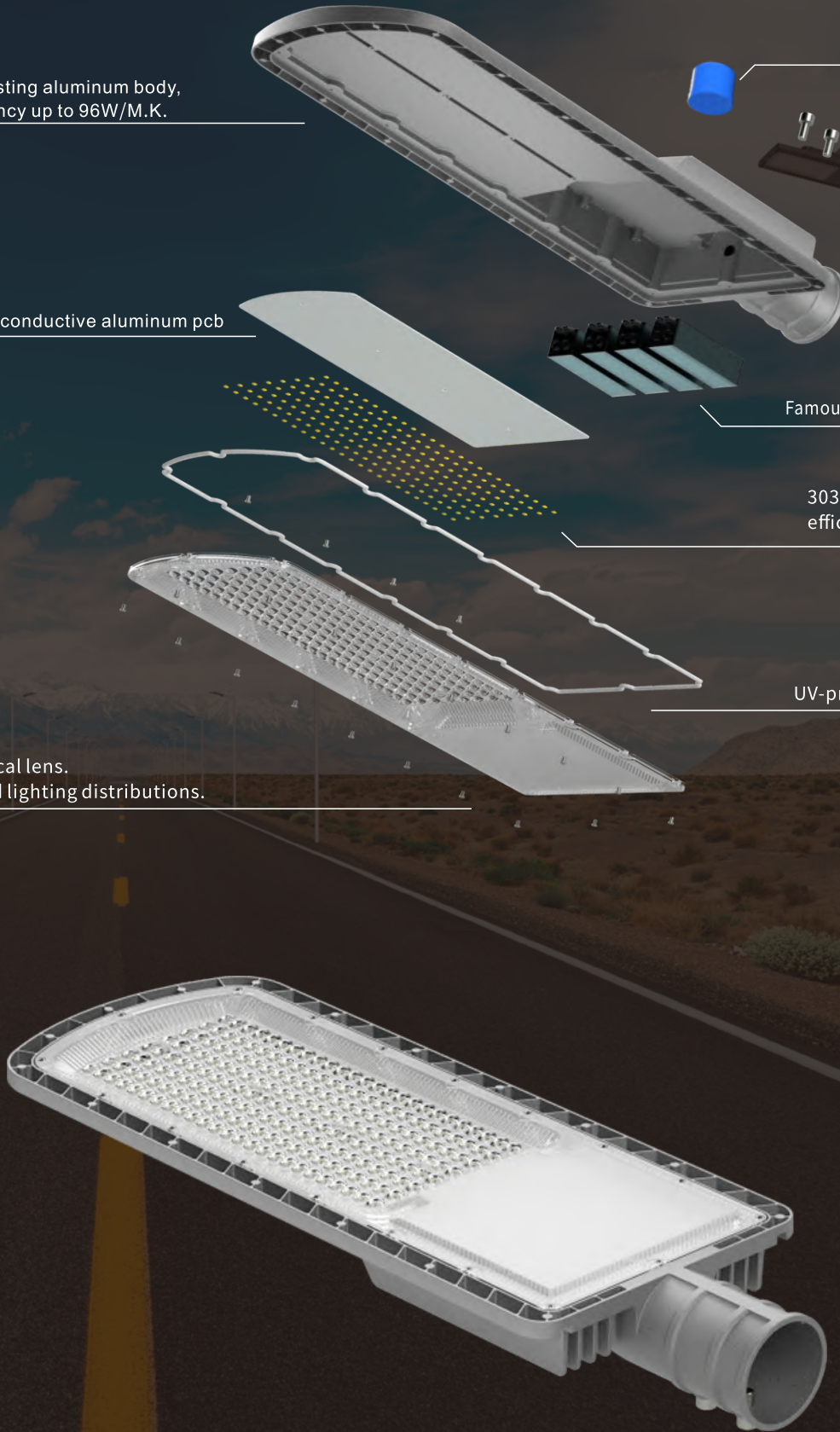
Highly thermal conductive aluminum pcb

Famous Brand Waterproof LED Driver

3030SMD light source, lighting
efficacy up to 150lm/W

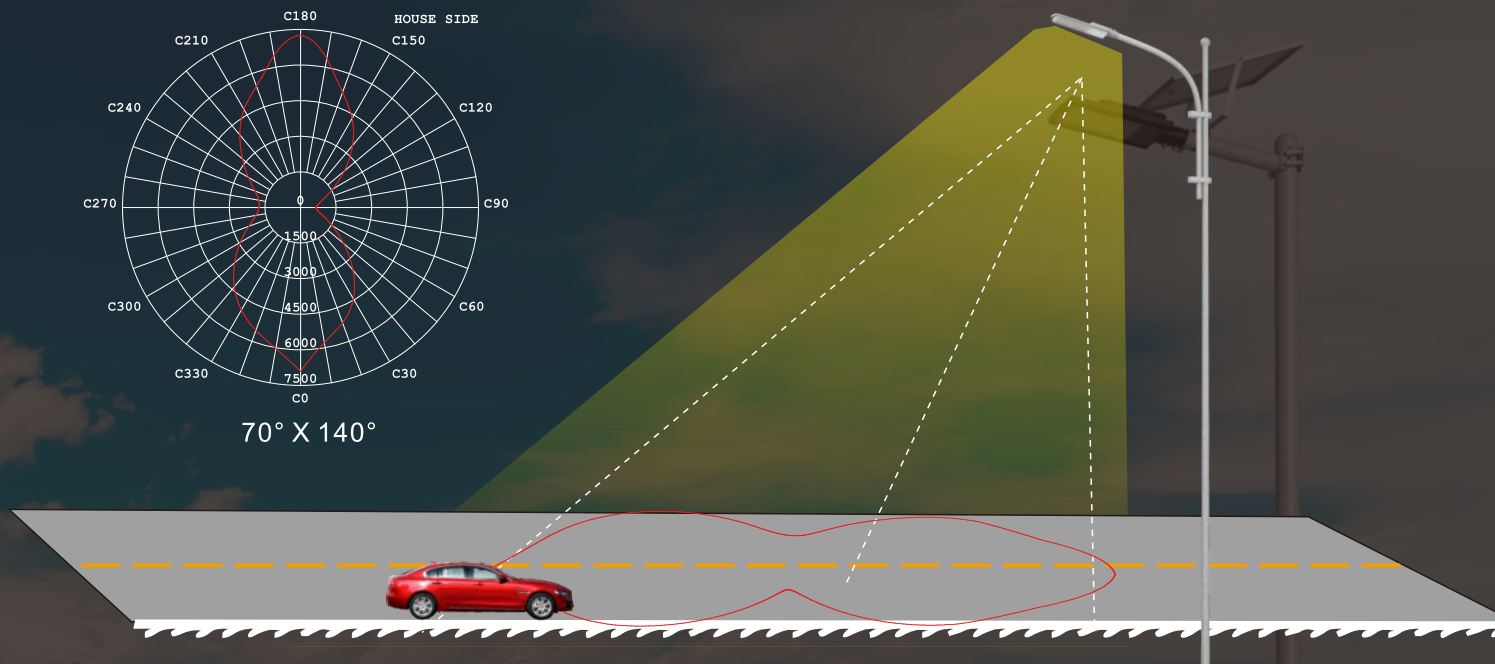
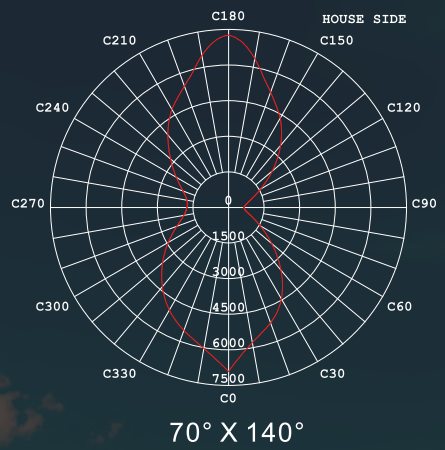
UV-proof waterproof silicone gel

UV-proof optical lens.
Precision road lighting distributions.



OPTICS

Tech. Support: Tell us the road length, width and pole height. We have engineer team to respond the DIALUX simulations for lights quantity calculation and effects. .ies files are available upon request.



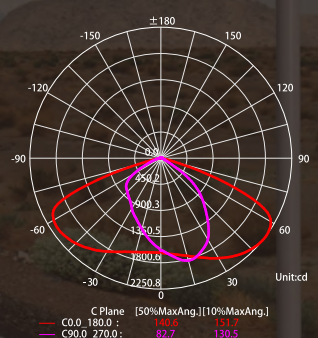
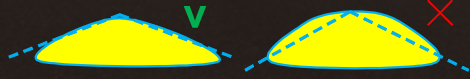
Energy Saving Design



Highly Uniformity Design

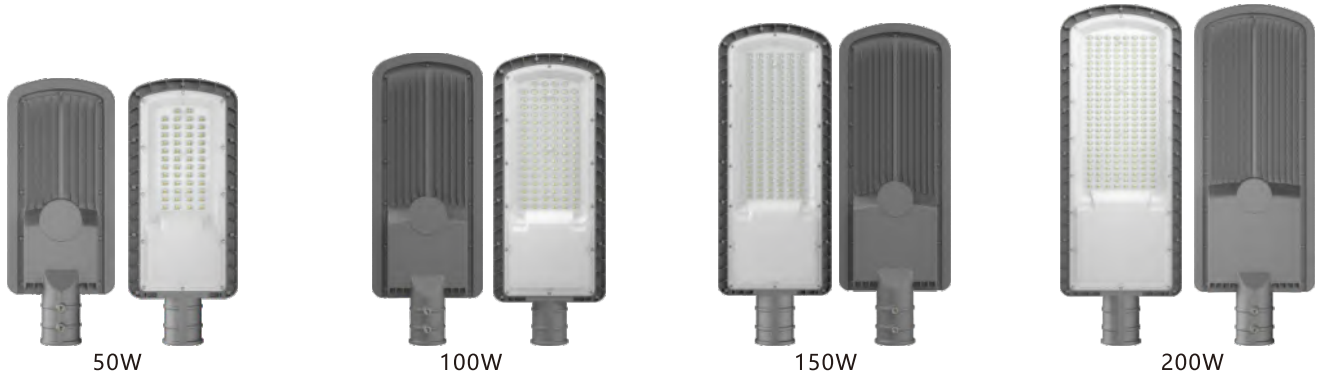


Cut-off Angle Design



C plane lighting distributions

PARAMETER



Model No.	LU-STZ-50W	LU-STZ-100W	LU-STZ-150W	LU-STZ-200W	
Rate Power	50W	100W	150W	200W	
LED Qty	50pcs	100pcs	180pcs	240pcs	
Pole size	φ50mm	φ50mm	φ50/60mm	φ50/60mm	
Lamp Size(mm)	415*170*70	495*190*70	595*210*80	645*230*80	
Material	Die-casting aluminum Body + PC Lens				
Finished	Dark Grey				
Chips	Epistar SMD				
Driver	Hahga Driver				
Input Voltage	AC85-265V				
T.H.D.	<15%				
P.F.	>0.95				
Luminous Efficiency	120lm/W / 140lm/W				
Luminous Flux(120lm/W)	3600lm	6000lm	12000lm	18000lm	24000lm
Luminous Flux(140lm/W)	4200lm	7000lm	14000lm	21000lm	28000lm
CRI	>70Ra / >80Ra				
Beam Angle	60/90/120/T2M/T3M/T4M				
IP Level	IP66				
IK Level	IK10				
Input Wire	SJOW17AWGx3C&H05RN-F 1.0m ² (30cm)				
Warranty	3Year (36,000hr) / 5year(50,000hr)				
Optional Function	Photocell / Motion sensor / 0-10V / DALI ...etc				

PACKAGE

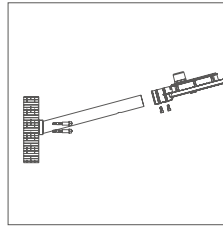


Model	Package Size(mm)	Pcs/Ctn	20'GP/pcs	40'GP/pcs	40'HQ/pcs
50W	405*365*440	10	4305	8917	10455
100W	405*405*520	10	3283	6800	7973
150W	470*225*620	5	2135	4423	5186
200W	470*245*670	5	1815	3759	4407

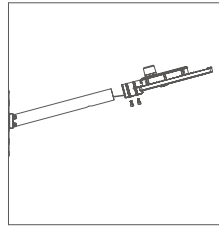
SAFETY PARAMETER

Protection	
Output Short Circuit Protection	Burp,Auto-recover
Output Over-Voltage Protection	Auto-recover
Output Open Circuit Protection	Auto-recover
Over-heat Protection	Auto-recover
Safety Standard	GB19510.1,GB19510.14; EN61347-1,EN61347-2-13; UL8750,CSAC22.2No.250.13-12
Dielectric Strength	P-S:3750VAC/5MA/60s P-E:1500VAC/5mA/60s
Insulation Resistance	I/P-O/P:>50M Ohms / 500VDC/ 25°C /70%RH
Leakage Current	<0.25mA for Class 2 at max Input Voltage
EMI	GB17743,GB17625.1; EN55015,EN61000-3-2,EN61000-3-3,FCCClassB.
EMS	EN61000-4-2,3,4,5,6,8,11,EN61547.
Surge Immunity	6KV
Operating Temperature	-40°C~ 60°C
Operating Humidity	20 ~ 90 %RH
Storage Temperature	-40°C~ 85°C
Storage Humidity	20 ~ 90 %RH

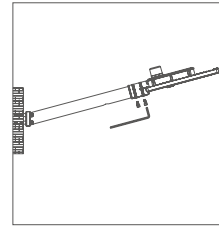
INSTALLATION



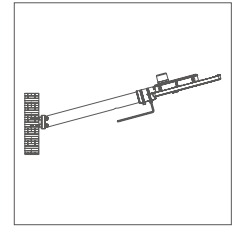
1 Use screws to fix the lamp holder on the wall.



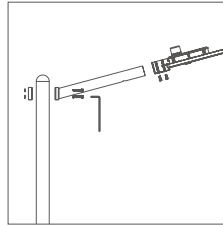
2 Connect wire and put the lamp on the lamp holder.



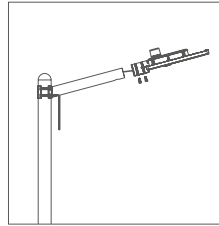
3 Fasten the screws.



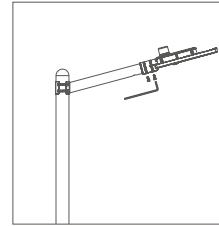
4 Installation completed.



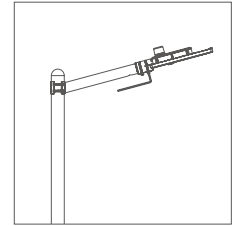
1 Mount the lamp holder on the pole.



2 Connect wire and put the lamp on the lamp holder.



3 Fasten the screws.



4 Installation completed.

CAUTIONS:

1. Installation must be done by professional electricians .
2. Do NOT take apart the product. It may be dangerous.
3. Do NOT stare at the light with naked eyes. It is harmful to eyes.
4. For outdoor lighting, waterproof measurements must be done for the cable terminals.

WARRANTY

1. All LED Street Lights are warranted by the manufacturer to be free of defects in material and workmanship for 3 or 5 years(as per sale contracts).
2. Warranty becomes void if the products is modified, improperly installed or used, damaged by accident or neglect, or if any parts are improperly installed or replaced by the user.
3. During the warranty time, if the products fails at normal environment and applications, we should decide by our own to repair or replace without any charge.

